

## MATLAB TAH – Student license

MATLAB TAH Student license can be used by the students only and they can install this license on their personal laptop/computer only. The activation type of this license is 'Individual' and maximum number of computer they can install for this license is unlimited. Student need to use a same computer login username for all the installed computers.

### Steps Performed by Student

1. Retrieve Activation Key
2. Create MathWorks Account
3. Add the TAH student license into the MathWorks account
4. Install product files
5. Activate installation

#### Step 1: Retrieve Activation Key

1. To retrieve the Activation Key, you must log in to your myMapua account.
2. In your myMapua, click on the MATLAB link were you could find the Activation Key.

#### Step 2: Create a MathWorks Account

1. To activate the software, you must have a MathWorks Account. You can use an existing account, but the email address used for the account must include the university's email domain and the account must be set up for Student use.
2. To create an account at the MathWorks website, click **Create Account**. When you create the account, make sure to set it up for Student use.

### Create MathWorks Account

Email Address	<input type="text"/>
	You will need to verify your email address
Country/Region	Malaysia
How will you use MathWorks software?	Please select
	Please select Commercial work (including research) Government work (including research) Personal, non-commercial projects Teaching or research in school <b>Student use</b>
Are you at least 13 years or older?	
	<input type="button" value="Cancel"/> <input type="button" value="Create"/>

### Step 3: Add the TAH Student License to Your Account

1. To activate the software, you must add the TAH Student license to your account (also known as associating your MathWorks Account with a license). To do this, you use the Activation Key from your myMapua account.
2. To add the TAH Student license to your account at the License Center, follow the steps below:
  - a. Login into your MathWorks account at MathWorks Web site
  - b. Associate the TAH license by using activation key:

### Don't miss out on extra license benefits!

Already using MATLAB? Enter the license number you are using and click 'Associate License' to gain access to additional benefits now.

**Activation Key or License Number\*:**

[Associate License](#)

Type 'license' at the MATLAB prompt to get your [license number](#) or get an activation key from your MATLAB administrator.

*\*Some licenses may require an Activation Key to associate.*

No thanks

- c. If you having any existing license, you may add this license additionally by using the activation keys:

The screenshot shows the MathWorks Account interface. At the top, there is a search bar and navigation links for My Account, Profile, Quotes, Orders, and Community Profile. Below this is a profile picture placeholder and the 'My Software' section. A table with columns 'License', 'Label', 'Option', and 'Use' is visible. In the bottom left, there are links for MATLAB Drive, Service Requests, Bug Reports, and Hardware Support. A red box highlights the 'Associate to an additional license' button in the Hardware Support section. A link 'View additional Licenses or Trials' is also present.

## Step 4: Install Product Files

1. Get access to the product files. For example, the administrator at your site might give you the location of a server on your internal network where you can get the files. If your administrator wants you to download product files from the MathWorks website, follow these instructions: a. Navigate into MathWorks web site License center <https://www.mathworks.com/licensecenter> and login with your MathWorks account, then proceed to select the TAH license b. At the new page, click on 'Download':



2. Once the installer is ready, start the installer:
  - Windows: Double-click the setup.exe file
  - Mac OS X: Double-click the InstallForMacOSX file
  - Linux: Run the install script.
3. Select 'Install using Internet'

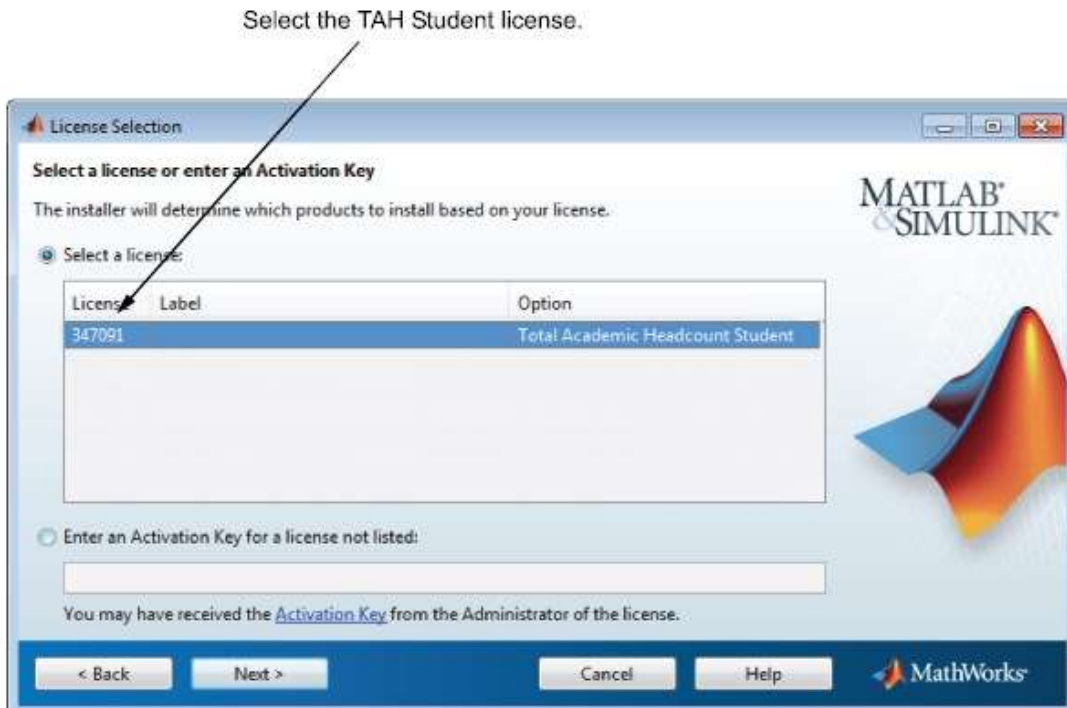


- Review software license agreement and click 'Next'.
- Log in to your MathWorks account, specifying the email address and password.



If you need to create an account, select this option.   Click Next.

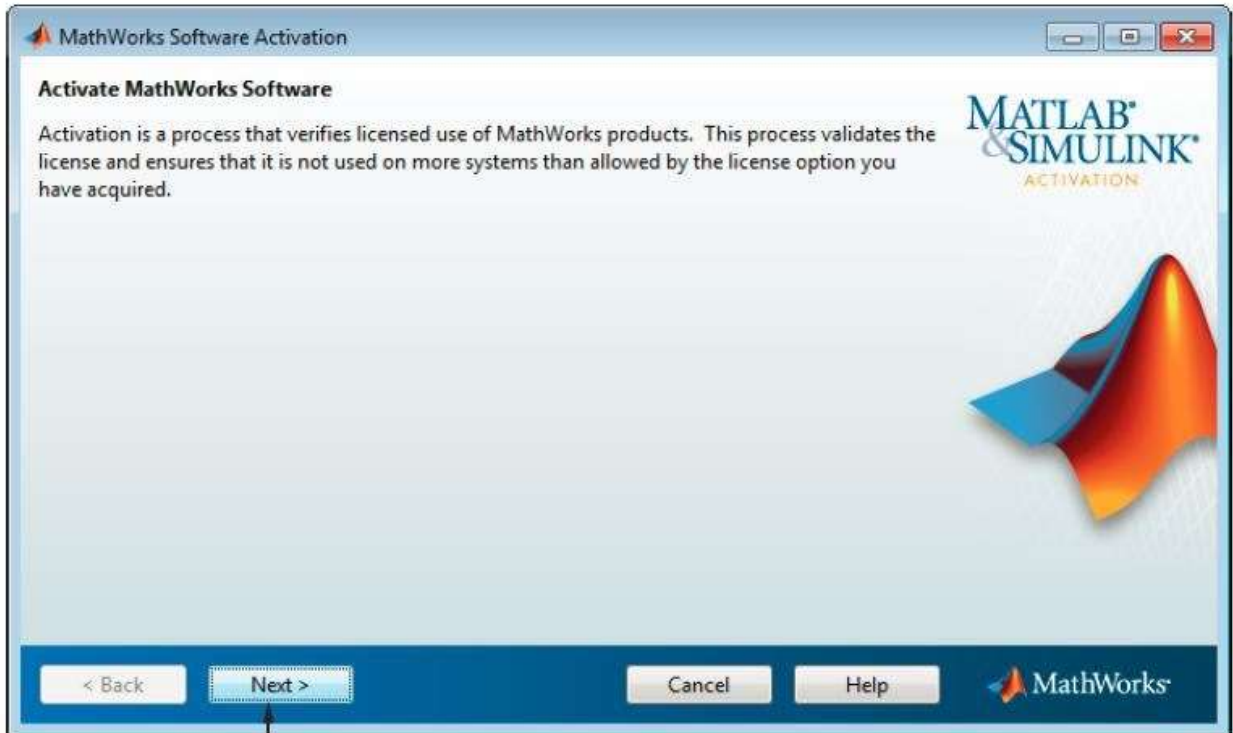
- Select the TAH Student license to install.



7. After the selection of the license, click next and proceed to choose the installation folder.
8. In the Installation Complete dialog box, click Next to proceed with the activation of the software. You cannot use the software until you activate it.

#### Step 5: Activate the Installation

1. In the MathWorks software Activation dialog box, click Next.



Click Next.

2. Login into your MathWorks account again if needed and select again the TAH Student license.
3. Specify again the activation key if needed.
4. Complete the activation by clicking Finish in the activation complete box.